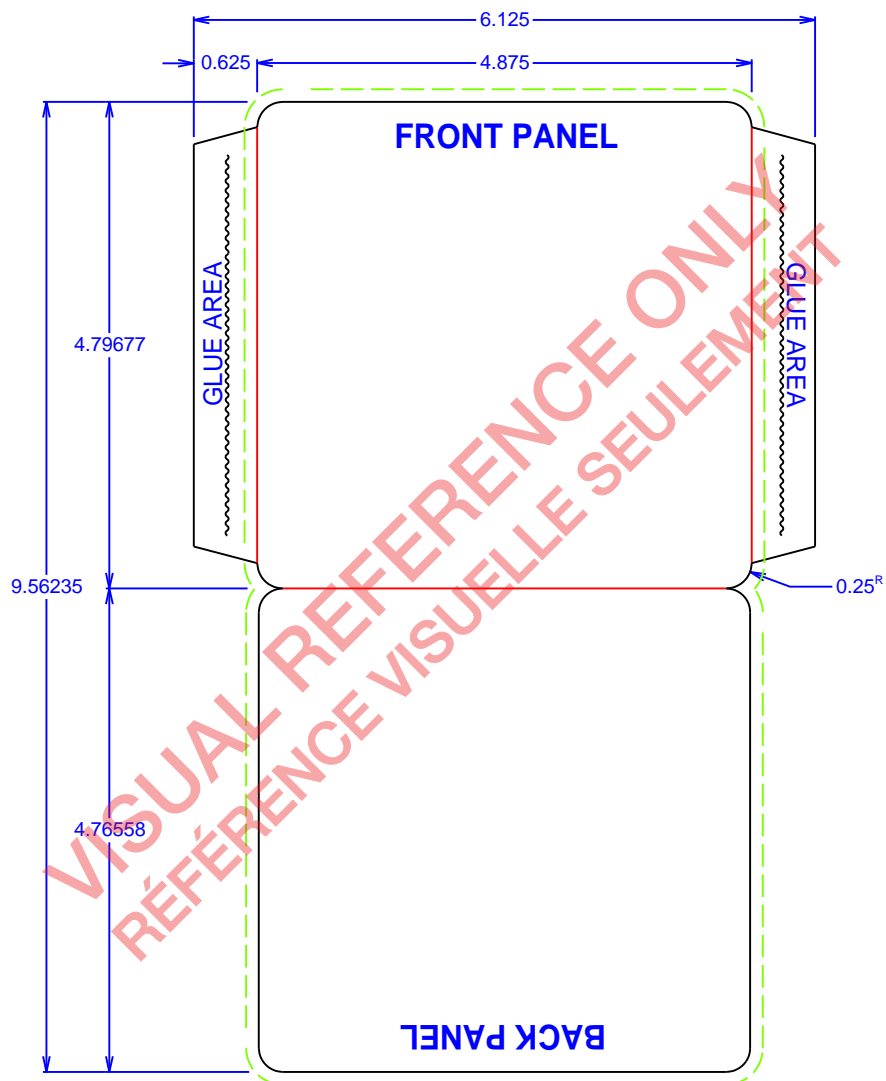


OUTSIDE



REFERENCE: INNER SLEEVE FOR 5" MINI JACKET, ROUND CORNERS	MATERIAL: I-SBS-15 OPEN BLANK: 9.5624 x 6.125 RULE LENGTH: 51.37776	NUMBER OF PANELS: 2 NUMBER OF TRAY: TRAY POSITION: NUMBER OF POCKET: 1 STYLE OF POCKET: CLOSDE END
STYLE: CD 5" Mini Jacket SIZE: 4.875 x 0 x 4.796875	DRAWN BY:	